



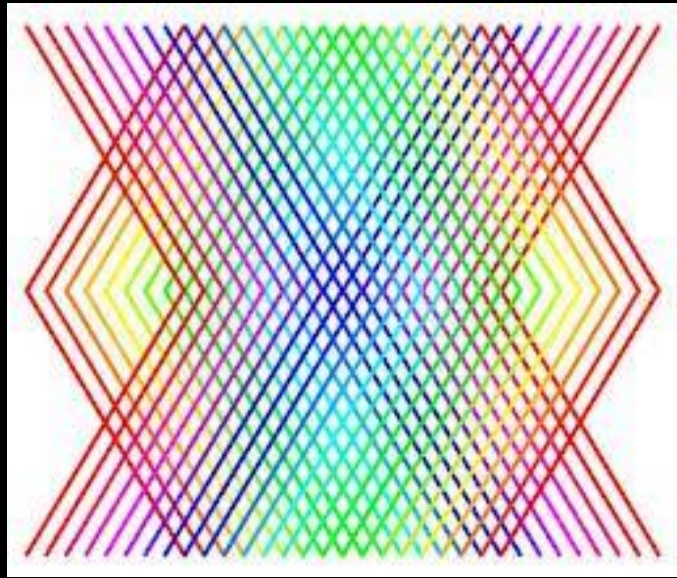
# INSPIRATIONAL JOURNAL

Tahje' Hill  
Art Foundation I

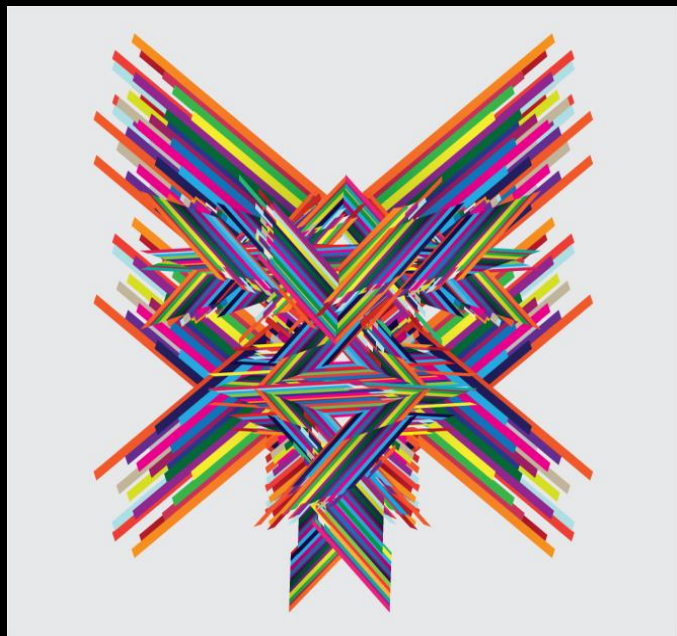
The World of  
Graphic Designs

# PROJECT 1

This design reminds me of project 1 because of the use of diagonal lines to create a design. This design shows the variety of diagonal lines in different directions. You can see that the lines are unified. They overlap each other to create a diamond shape in the middle. It also shows the complete focus of a huge X that unifies the image and creates the variety.



This design reminds me of Project 1 because it also shows lines. The design uses diagonal lines to form an image. You can see that the direction of the lines go outward. The lines look as though they are reaching out trying to spread across the page. The main focus is towards the middle of the image. It looks as if the line in the middle are stuck and are starting to reach out.

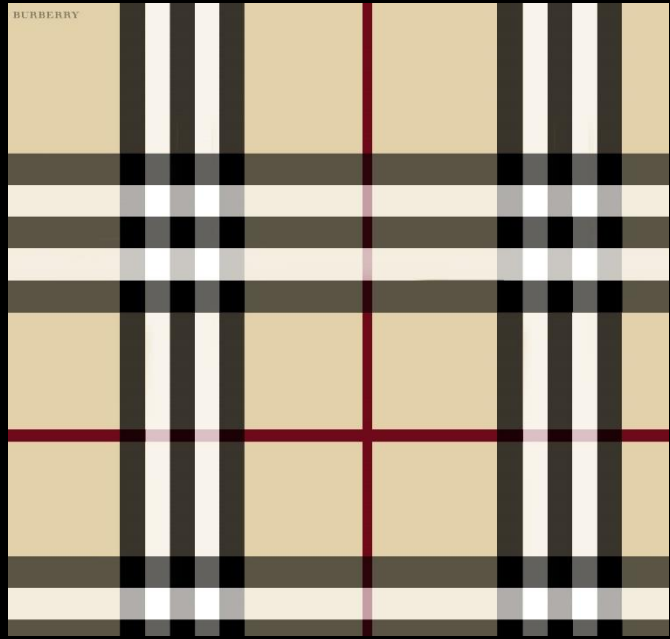


This design shows the other aspect of lines. It shows the use of curved lines un and upward direction. The various sizes of the curves give the image definition. The use of thick and thin curved lines gives it variety as well. I love the way that this image uses the space by not completely covering each corner or wall of the page.



# PROJECT 1

This image shows lines using vertical and horizontal lines. The image uses thick and thin lines to give the image a sense of focus. You notice that the first lines you see in this image are the black and white thick lines. This example shows the first part project 1 exactly. The space between each line is different in each line.

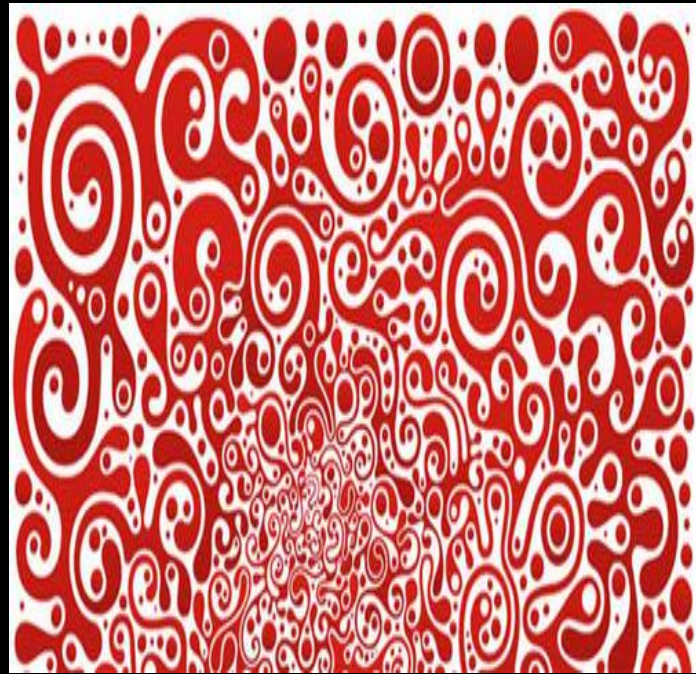


This image shows lines using all of the fundamentals. It uses diagonal, curve, and horizontal and vertical lines. The fact that this image is black and white like all of our projects is a bonus. It also uses thick, implied lines, and thin lines. This image embodies all of the aspects needed to create unity between lines.



# PROJECT 3

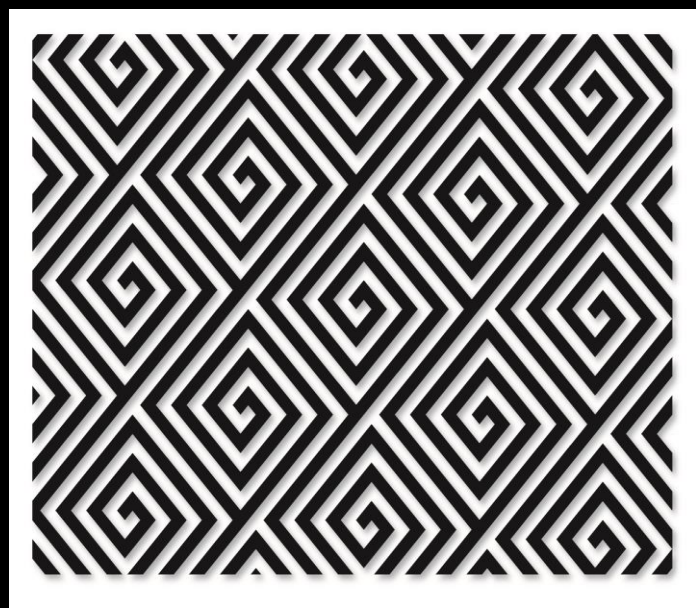
This design shows non-parallel lines. Each curve goes into different directions. It demonstrates rhythm by using various widths and spaces. It also shows various implied lines by the thickness of the curves. This image is grouped off into big curves, medium curves, and small curves.



This design is rather interesting. It starts in the middle and ascends outward in various ways. This image is also grouped off into big curves, medium curves, and small curves. This non-parallel design almost looks like it is sinking in instead of ascending outward.



This non-parallel image is simple. It crosses the other lines in a patterned form. It is difficult to focus on the pattern because of the image that the pattern creates. Instead of seeing the squares with diagonal lines in each direction, you see swirled diamonds that are connected to each other.



# PROJECT 3

This non-parallel line image shows all of the aspects of the design. It shows texture and proximity. It shows variety in the shapes. It shows grouping between the sizes and shapes of the design. The direction of the design spirals either outward towards the left or outward towards the right. It could spiral inward in either direction also.



This non-parallel line image shows texture. The variety of curves and turns prove that this image is has no parallel lines. The direction of this design seems as though it is crashing into each other. There are no true shapes or forms in this design.



# PROJECT 7

This design shows simple patterns using a letter. The implied letter is clearly shown as a green "D". The pattern of "D's" are clearly shown in a horizontal and vertical fashion. The image hides the pattern by using its compositions and values.



This is a design that shows no pattern at all. This design shows a lot of form. It makes the design difficult to which letters are being used. This is a great example of project 7. In part 1 we used one letter without showing pattern just like this image. We also had to use black and white to show the form without pattern.



This is another design that uses letters. This image however shows pattern and form. Although it is difficult to see the letters, we can see the pattern. The pattern's direction is in a diagonal way. It looks like they only used "K" and "d" for this design.



# PROJECT 7

This image clearly shows pattern perfectly. The pattern is slanted using the letter "O". The value of the colors used by the lightest colors and the darkest colors. The pattern in this image is not hidden or disguised but plainly seen through the human eye.



This design shows no type of pattern. The letters are scattered completely across the page. It is hard to tell what letters are used. It looks like the artist used "R" and "n". However, the different directions and ways that these letters are used shows the variety of shape placement.

